



Moor Tower, Waterhouse Moor, Harlow, CM18 6BE
£130,000

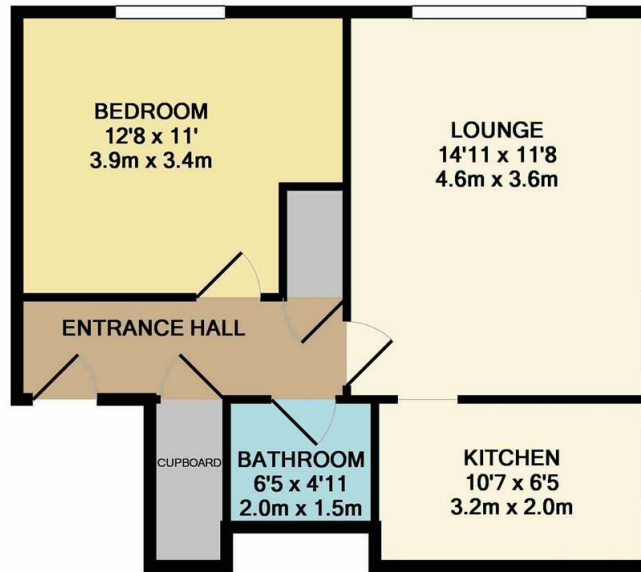
1 1 1 D

A set of four white icons on a dark blue background. From left to right: a bed icon, a bathtub icon, a sofa icon, and a double garage icon (represented by two car symbols and the letter 'D'). Each icon is followed by the number '1'.

Moor Tower, Waterhouse Moor, Harlow, CM18 6BE

Offered with no onward chain is this well presented, seventh floor one double bedroom, with beautiful views over Harlow. There is a communal lift leading to an entrance hallway, a large lounge/diner, kitchen with a range of wall and base units, a double bedroom and a bathroom with a white three piece suite. Moor Tower is located on Waterhouse Moor, within walking distance of Bush Fair and Harlow Town Centre, local shops and open fields.

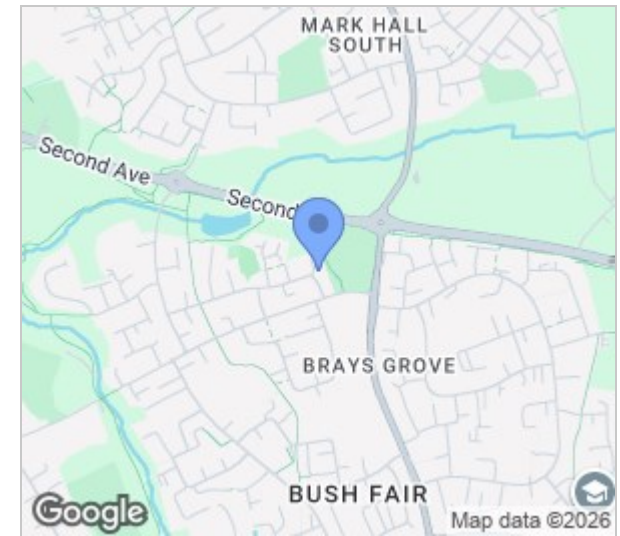
Lease Remaining: 84 years. Service Charge: £174 per month. Ground Rent: £10 per year.



1009

TOTAL APPROX. FLOOR AREA 478 SQ.FT. (44.4 SQ.M.)

Whilst every attempt has been made to ensure the accuracy of the floor plan contained here, measurements of doors, windows, rooms and any other items are approximate and no responsibility is taken for any error, omission, or mis-statement. This plan is for illustrative purposes only and should be used as such by any prospective purchaser. The services, systems and appliances shown have not been tested and no guarantee as to their operability or efficiency can be given
Made with Metropix ©2018



Energy Efficiency Rating		
	Current	Potential
Very energy efficient - lower running costs		
(92 plus) A		
(81-91) B		
(69-80) C		
(55-68) D		
(39-54) E		
(21-38) F		
(1-20) G		
Not energy efficient - higher running costs		
	61	69
England & Wales	EU Directive 2002/91/EC	EU Directive 2002/91/EC

Environmental Impact (CO ₂) Rating		
	Current	Potential
Very environmentally friendly - lower CO ₂ emissions		
(92 plus) A		
(81-91) B		
(69-80) C		
(55-68) D		
(39-54) E		
(21-38) F		
(1-20) G		
Not environmentally friendly - higher CO ₂ emissions		
England & Wales	EU Directive 2002/91/EC	EU Directive 2002/91/EC

These particulars, whilst believed to be accurate are set out as a general outline only for guidance and do not constitute any part of an offer or contract. Intending purchasers should not rely on them as statements of representation of fact, but must satisfy themselves by inspection or otherwise as to their accuracy. No person in this firm's employment has the authority to make or give any representation or warranty in respect of the property.

T. 01279 216216 E. info@rjestateagents.co.uk

1 Acorn Mews, Harlow, Essex, CM18 6NA www.rjestateagents.co.uk